

# Importance of Safety Protocols in Science Experiments

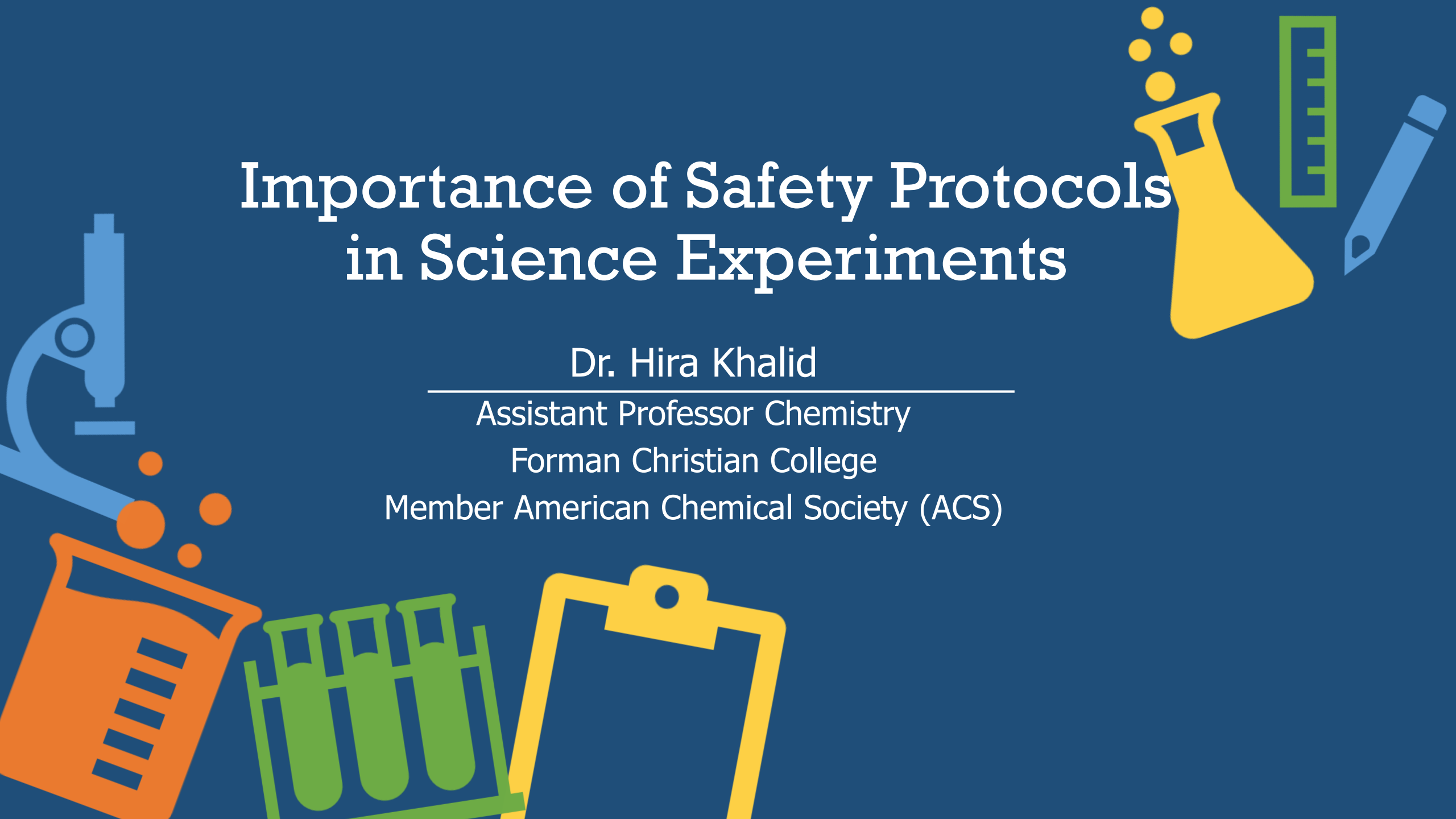
Dr. Hira Khalid

---

Assistant Professor Chemistry

Forman Christian College

Member American Chemical Society (ACS)



# Safety Begins Before You Go For Experiment!

Safe laboratory practice is based on understanding and respect, not fear!

1. It is important you to be familiar with the equipment in your working space, even if you don't use it yourself.
2. Proper steps to take in the unfortunate event that something does go wrong.



# Dressing for Lab



Safety Goggles



Lab Coat



Face Mask



Gloves



Closed Toed Shoes



Head Caps/scarfs



# Safe Lab Practices 1

Do not taste, or smell directly any chemicals

Never return unused chemicals to their original container

Contact lenses may be not be worn in the laboratory



# Safe Lab Practices 2

Use pipette filler for liquid chemicals entry

Never use chipped, cracked, or dirty glassware

Don't eat food during experiment

Report any accident to the mentor immediately



# Hazard Signs



Harmful



Explosive



Corrosive



Dangerous  
for the  
environment



Flammable



Toxic



Oxidizing



Radioactive



Biohazard



Poison



Oxidizing



General danger



Explosive



Flammable



Electrical hazard



# At the End of Your Experiment

- Do not leave open flames when work completed.
- Work place/equipment must be clean.
- All chemicals should dispose as directed.
- Wash your hands with soap and water.



The background is a solid dark blue. It features several stylized icons: a blue microscope on the left, a yellow Erlenmeyer flask with yellow bubbles rising from it in the top right, a green graduated cylinder next to it, a blue pencil to the right of the cylinder, an orange beaker with blue liquid in the bottom left, a green test tube rack with three test tubes in the bottom center, and a yellow clipboard with a white sheet of paper in the bottom right. The text is centered in white, with 'SAFE FIRST!' in a larger, bold font and underlined.

**Science is fun when  
you are SAFE FIRST!**